

## Table of contents

<b>Project 1</b>	
Table of contents	1
<b>FL1000W30D</b>	
Luminaire Data Sheet	2
<b>Exterior Scene 1</b>	
Planning data	3
Sport Luminaires (Coordinates List)	4
3D Rendering	10
False Color Rendering	11
<b>Exterior Surfaces</b>	
<b>Copy of Ground Element 1</b>	
<b>Surface 1</b>	
Isolines (E)	12
Greyscale (E)	13
Value Chart (E)	14
<b>Soccer Field 1 Calculation Grid (PA)</b>	
Isolines (E, Perpendicular)	15
Greyscale (E, Perpendicular)	16
Value Chart (E, Perpendicular)	17
<b>Track 1 Calculation Grid (PA)</b>	
Value Chart (E, Perpendicular)	18

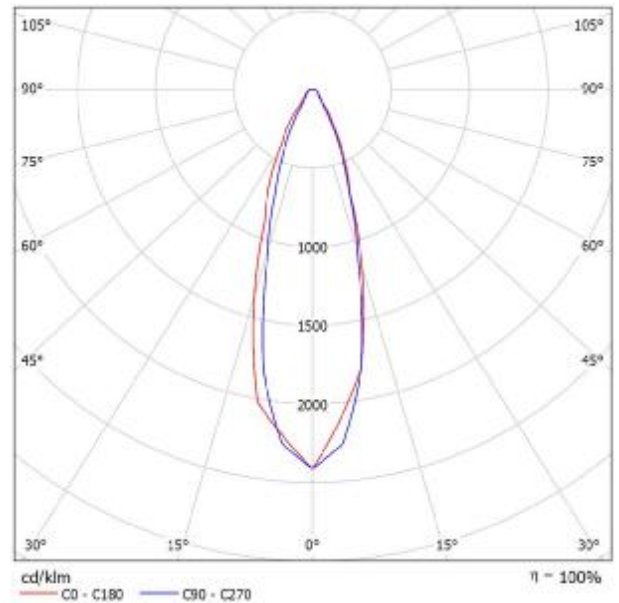


Operator  
Telephone  
Fax  
e-Mail

## FL1000W30D / Luminaire Data Sheet

See our luminaire catalog for an image of the luminaire.

Luminous emittance 1:

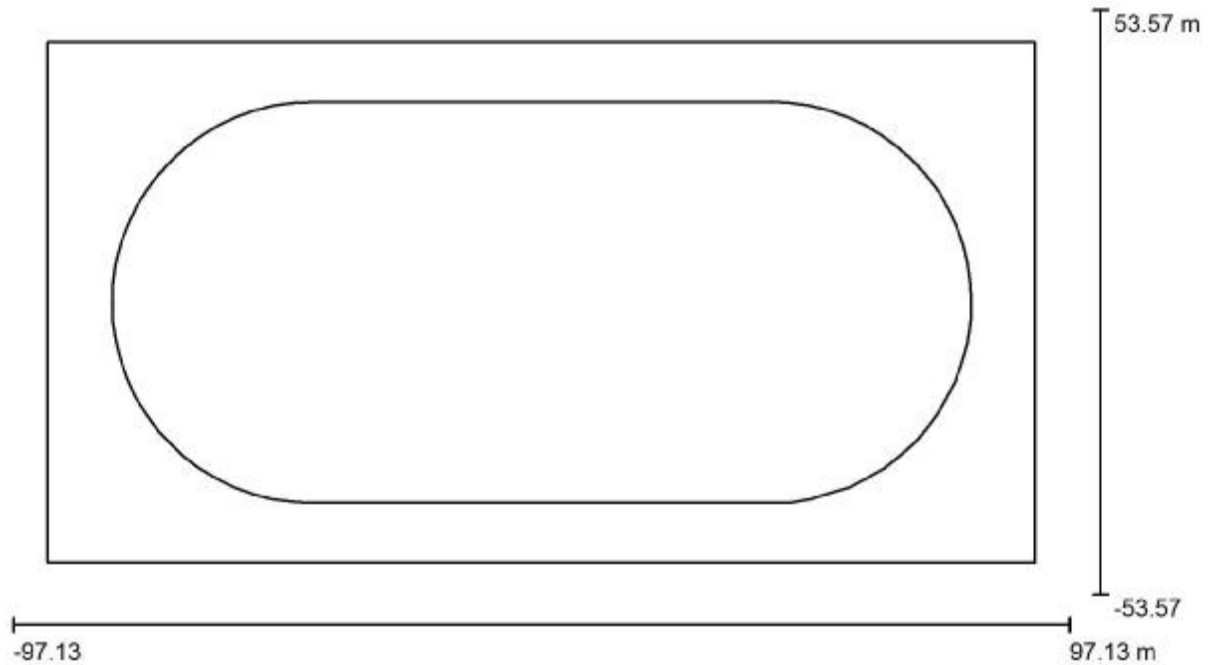


Luminaire classification according to CIE: 100  
CIE flux code: 86 94 98 100 101

Due to missing symmetry properties, no UGR table can be displayed for this luminaire.

Operator  
 Telephone  
 Fax  
 e-Mail

**Exterior Scene 1 / Planning data**



Light loss factor: 0.90, ULR (Upward Light Ratio): 10.0%

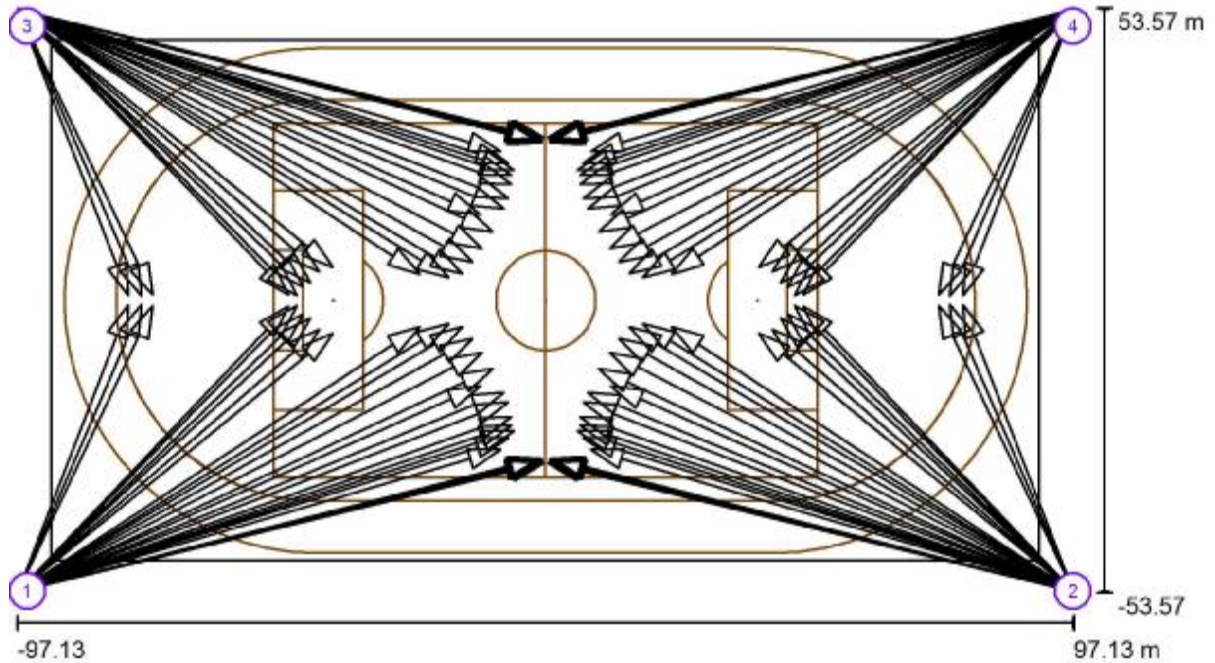
Scale 1:1389

**Luminaire Parts List**

No.	Pieces	Designation (Correction Factor)	Φ (Luminaire) [lm]	Φ (Lamps) [lm]	P [W]
1	152	FL1000W30D (1.000)	149996	149520	1004.0
Total:			22799400	Total: 22727040	152614.1

Operator  
Telephone  
Fax  
e-Mail

Exterior Scene 1 / Sport Luminaires (Coordinates List)



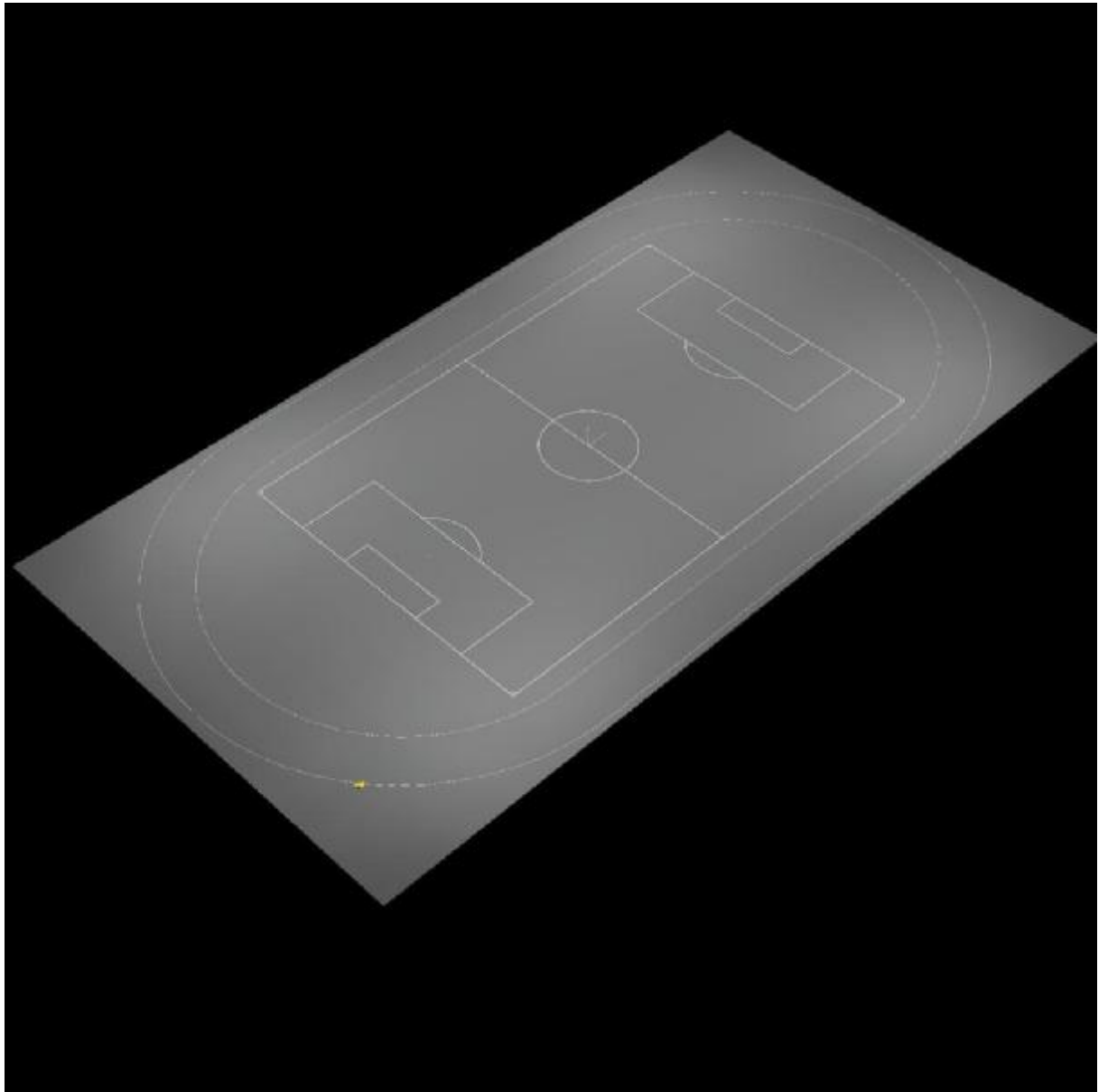
Scale 1 : 1389

List of the Sport Luminaires

Luminaire	Index	Position [m]			Aiming Point [m]			Angle [°]	Alignment	Pole
		X	Y	Z	X	Y	Z			
FL1000W-07-G9-30D	1	-96.893	-53.324	40.000	-74.225	-0.736	0.000	34.9	(C 0, G 0)	/
FL1000W-07-G9-30D	1	-96.893	-53.324	40.000	-47.297	-1.059	0.000	29.0	(C 0, G 0)	/
FL1000W-07-G9-30D	1	-96.893	-53.324	40.000	-6.921	-18.657	0.000	22.5	(C 0, G 0)	/
FL1000W-07-G9-30D	1	-96.893	-53.324	40.000	-7.678	-16.847	0.000	22.5	(C 0, G 0)	/

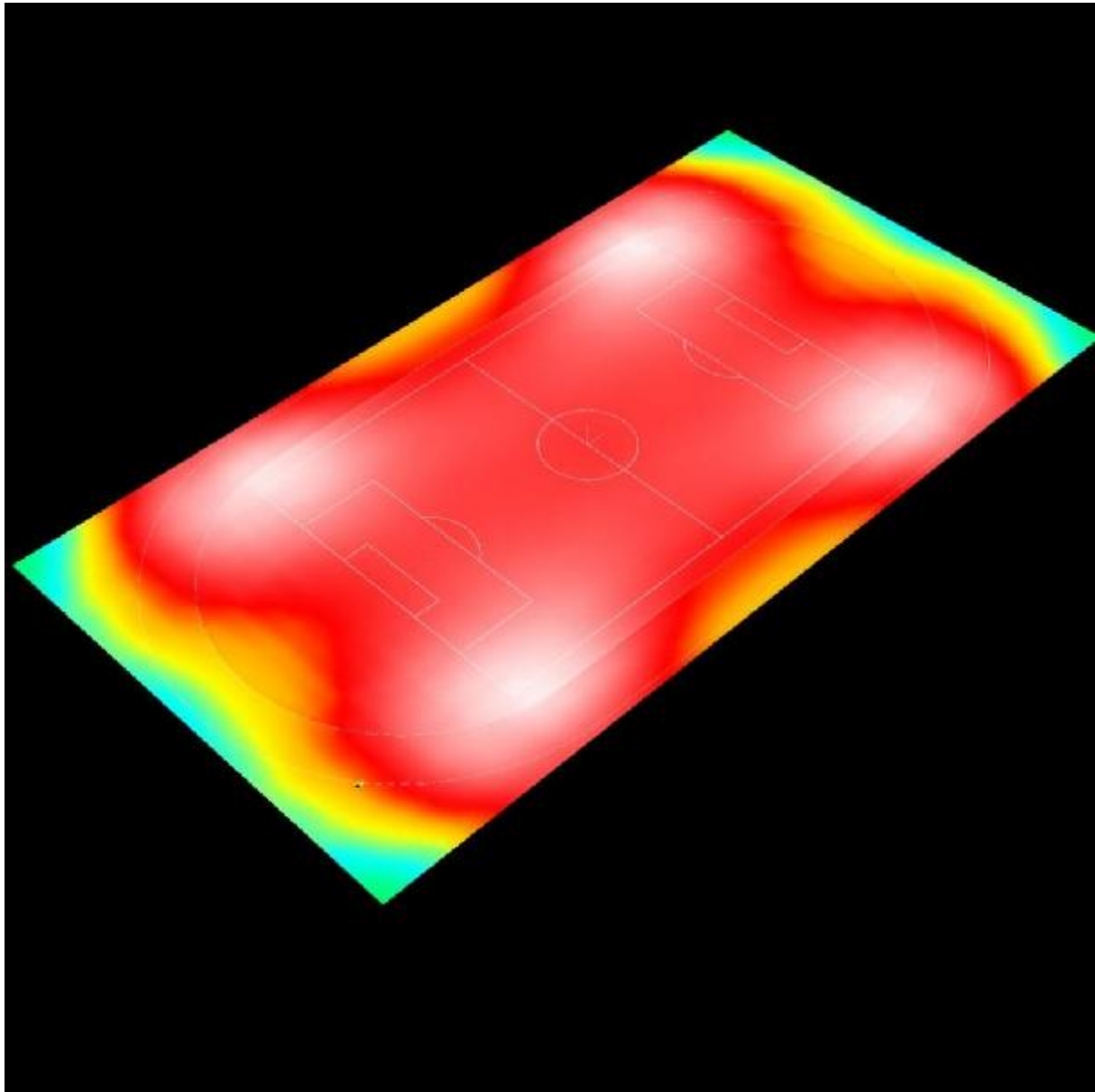
Operator  
Telephone  
Fax  
e-Mail

Exterior Scene 1 / 3D Rendering



Operator  
Telephone  
Fax  
e-Mail

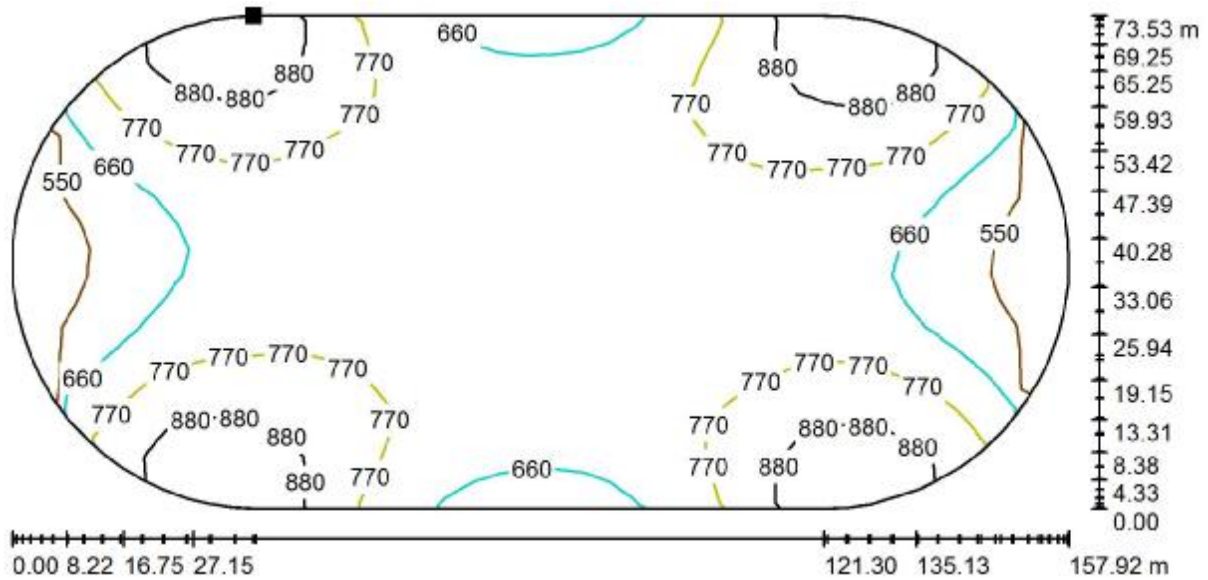
Exterior Scene 1 / False Color Rendering



0      50      100      200      300      400      500      600      1000      lx

Operator  
 Telephone  
 Fax  
 e-Mail

Exterior Scene 1 / Copy of Ground Element 1 / Surface 1 / Isolines (E)



Values in Lux, Scale 1 : 1130

Position of surface in external scene:  
 Marked point:  
 (-42.870 m, 36.755 m, 0.000 m)

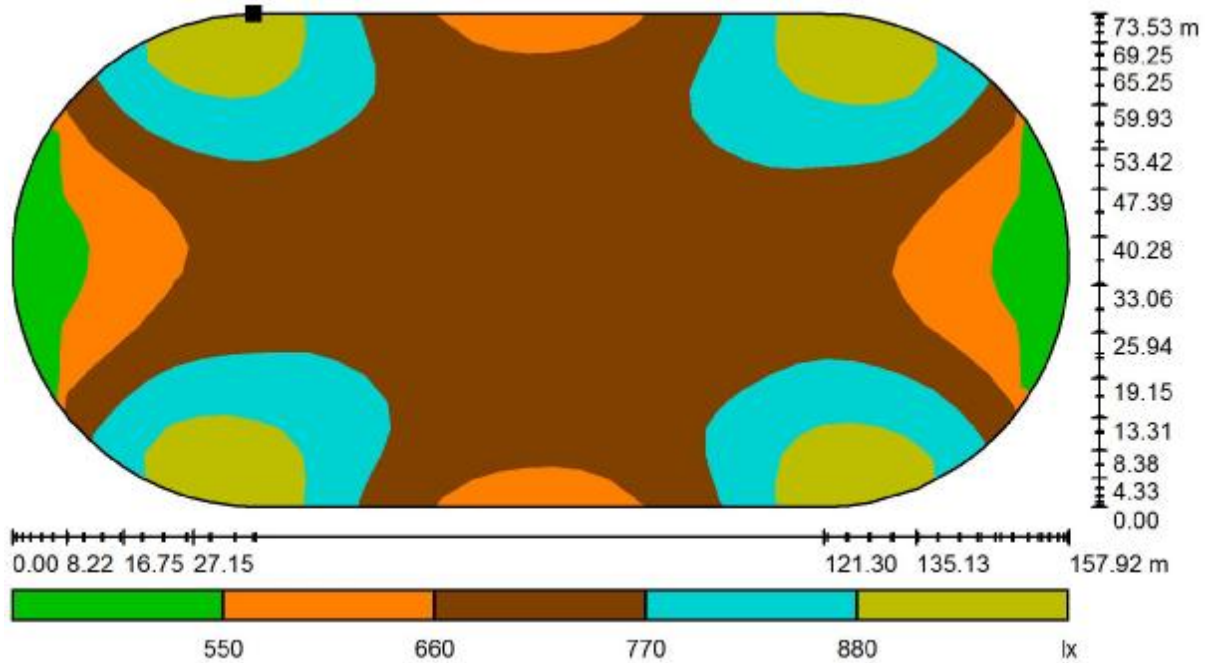


Grid: 39 x 19 Points

$E_{av}$ [lx]	$E_{min}$ [lx]	$E_{max}$ [lx]	u0	$E_{min} / E_{max}$
736	471	975	0.640	0.483

Operator  
Telephone  
Fax  
e-Mail

Exterior Scene 1 / Copy of Ground Element 1 / Surface 1 / Greyscale (E)



Scale 1 : 1130

Position of surface in external scene:  
Marked point:  
(-42.870 m, 36.755 m, 0.000 m)



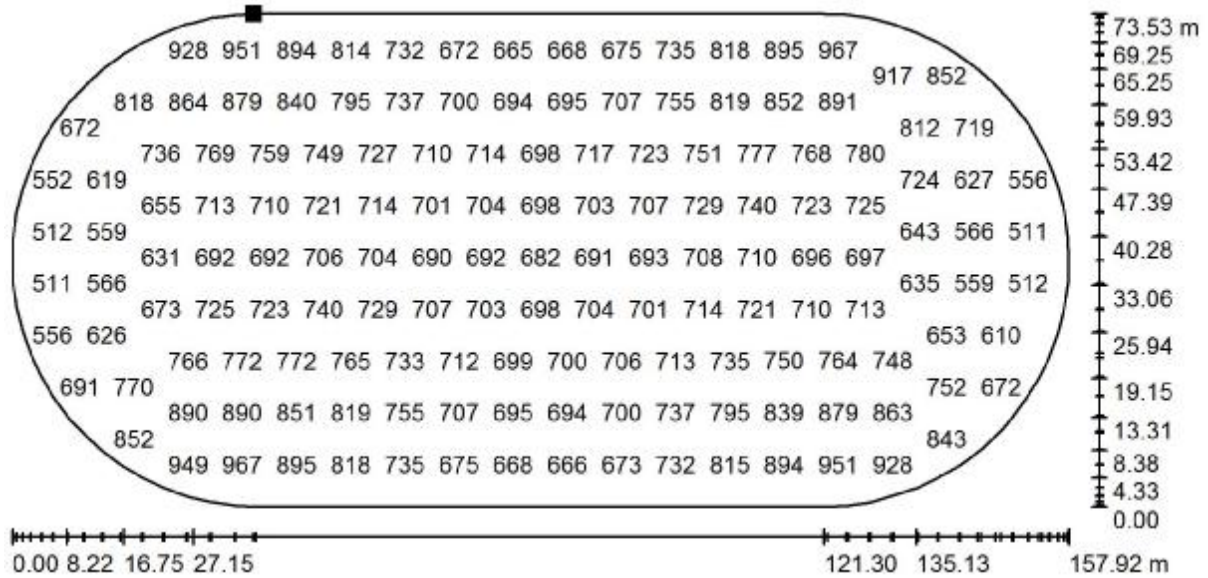
Grid: 39 x 19 Points

$E_{av}$ [lx]	$E_{min}$ [lx]	$E_{max}$ [lx]	$u_0$	$E_{min} / E_{max}$
736	471	975	0.640	0.483



Operator  
 Telephone  
 Fax  
 e-Mail

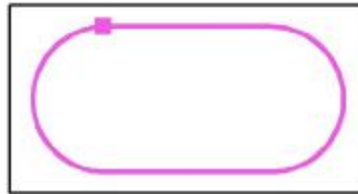
Exterior Scene 1 / Copy of Ground Element 1 / Surface 1 / Value Chart (E)



Values in Lux, Scale 1 : 1130

Not all calculated values could be displayed.

Position of surface in external scene:  
 Marked point:  
 (-42.870 m, 36.755 m, 0.000 m)

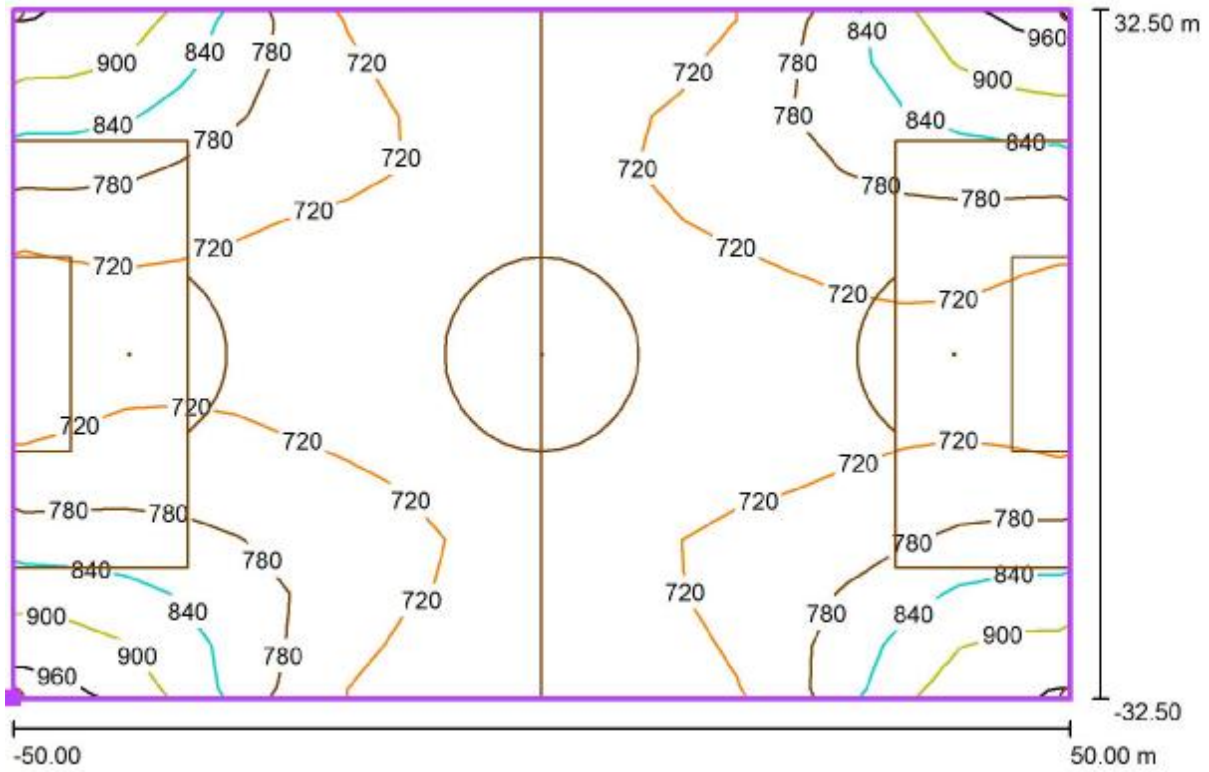


Grid: 39 x 19 Points

$E_{av}$ [lx]	$E_{min}$ [lx]	$E_{max}$ [lx]	u0	$E_{min} / E_{max}$
736	471	975	0.640	0.483

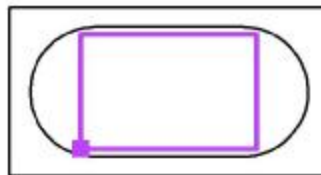
Operator  
 Telephone  
 Fax  
 e-Mail

**Exterior Scene 1 / Soccer Field 1 Calculation Grid (PA) / Isolines (E, Perpendicular)**



Values in Lux, Scale 1 : 715

Position of surface in external scene:  
 Marked point: (-50.000 m, -32.500 m,  
 0.000 m)

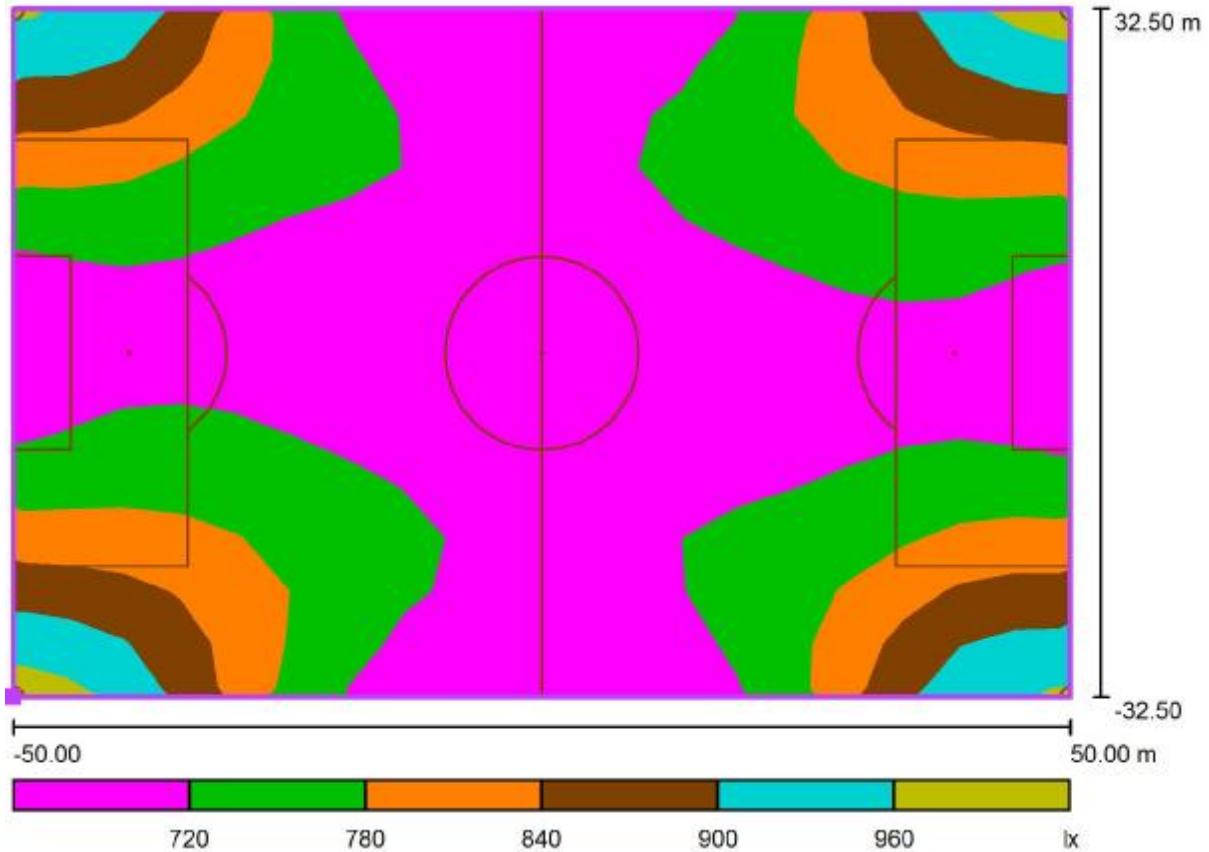


Grid: 19 x 13 Points

$E_{av}$ [lx]	$E_{min}$ [lx]	$E_{max}$ [lx]	u0	$E_{min} / E_{max}$
750	671	961	0.90	0.70

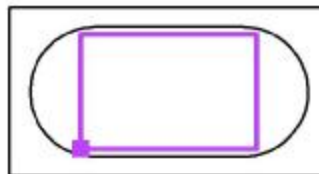
Operator  
Telephone  
Fax  
e-Mail

Exterior Scene 1 / Soccer Field 1 Calculation Grid (PA) / Greyscale (E, Perpendicular)



Scale 1 : 715

Position of surface in external scene:  
Marked point: (-50.000 m, -32.500 m, 0.000 m)

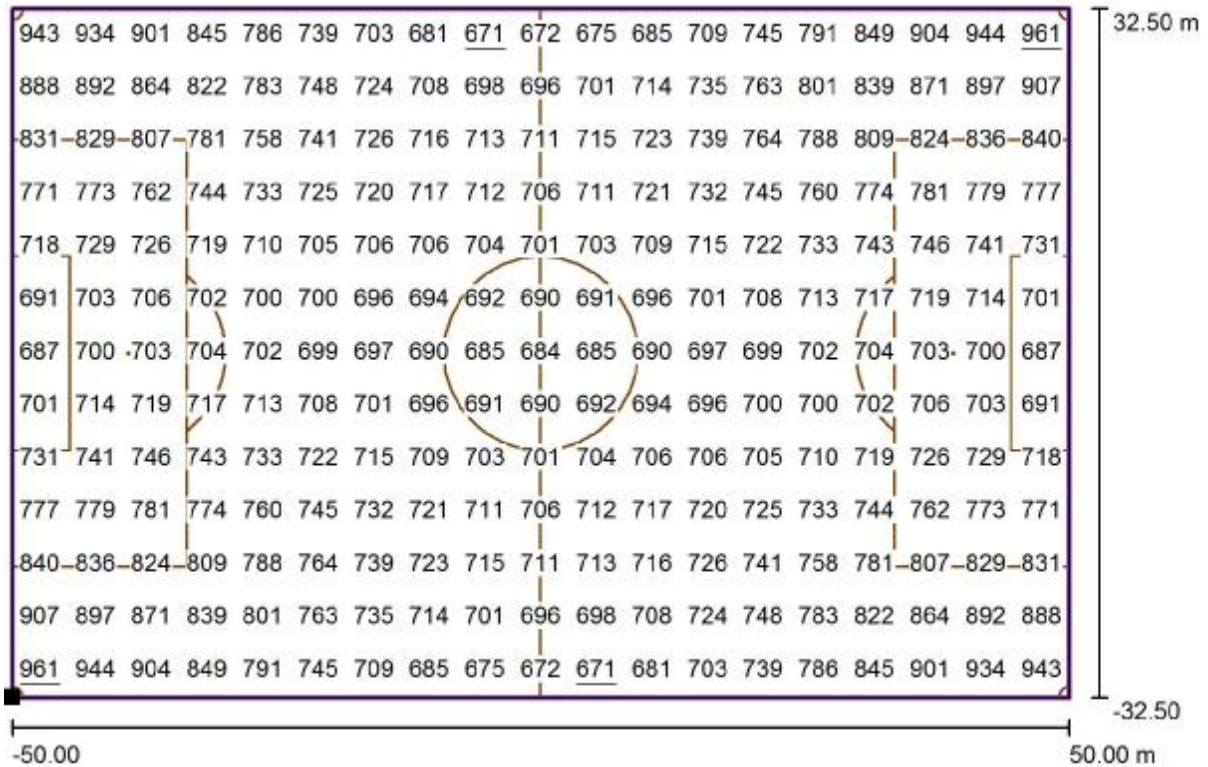


Grid: 19 x 13 Points

$E_{av}$ [lx]	$E_{min}$ [lx]	$E_{max}$ [lx]	u0	$E_{min} / E_{max}$
750	671	961	0.90	0.70

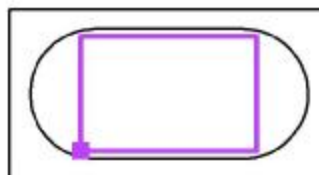
Operator  
Telephone  
Fax  
e-Mail

**Exterior Scene 1 / Soccer Field 1 Calculation Grid (PA) / Value Chart (E, Perpendicular)**



Values in Lux, Scale 1 : 715

Position of surface in external scene:  
Marked point: (-50.000 m, -32.500 m, 0.000 m)



Grid: 19 x 13 Points

$E_{av}$  [lx]  
750

$E_{min}$  [lx]  
671

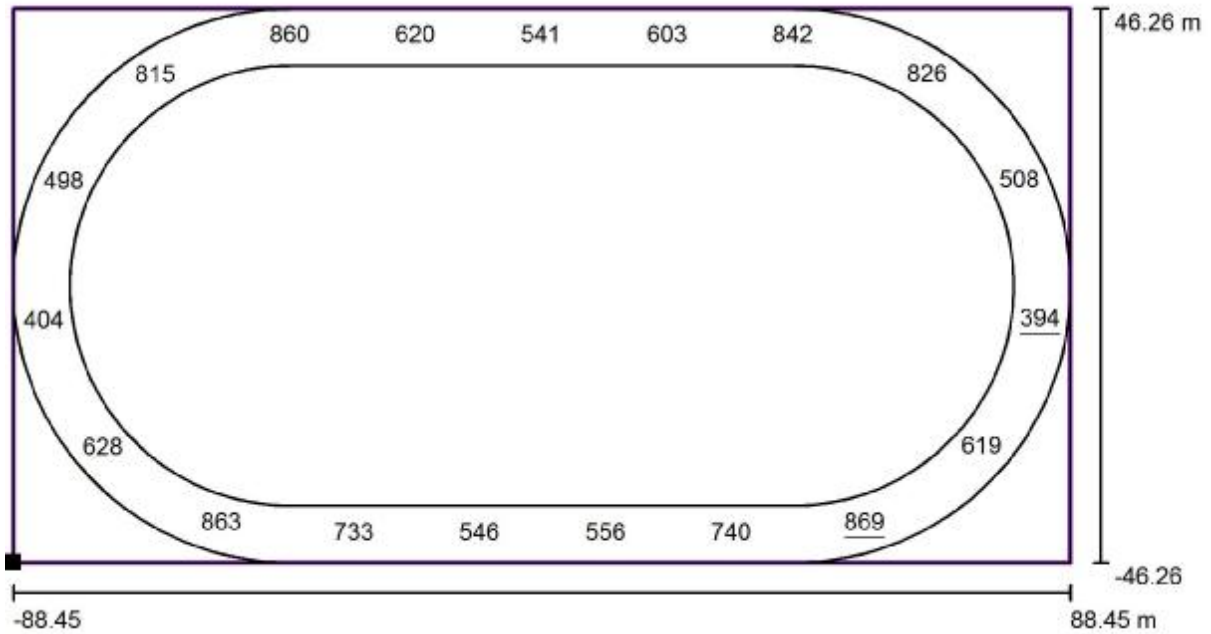
$E_{max}$  [lx]  
961

$u_0$   
0.90

$E_{min} / E_{max}$   
0.70

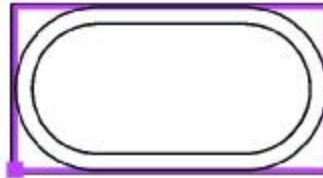
Operator  
 Telephone  
 Fax  
 e-Mail

**Exterior Scene 1 / Track 1 Calculation Grid (PA) / Value Chart (E, Perpendicular)**



Values in Lux, Scale 1 : 1265

Position of surface in external scene:  
 Marked point: (-88.455 m, -46.260 m, 0.000 m)



Grid: 19 x 1 Points

$E_{av}$ [lx]	$E_{min}$ [lx]	$E_{max}$ [lx]	u0	$E_{min} / E_{max}$
656	394	869	0.60	0.45